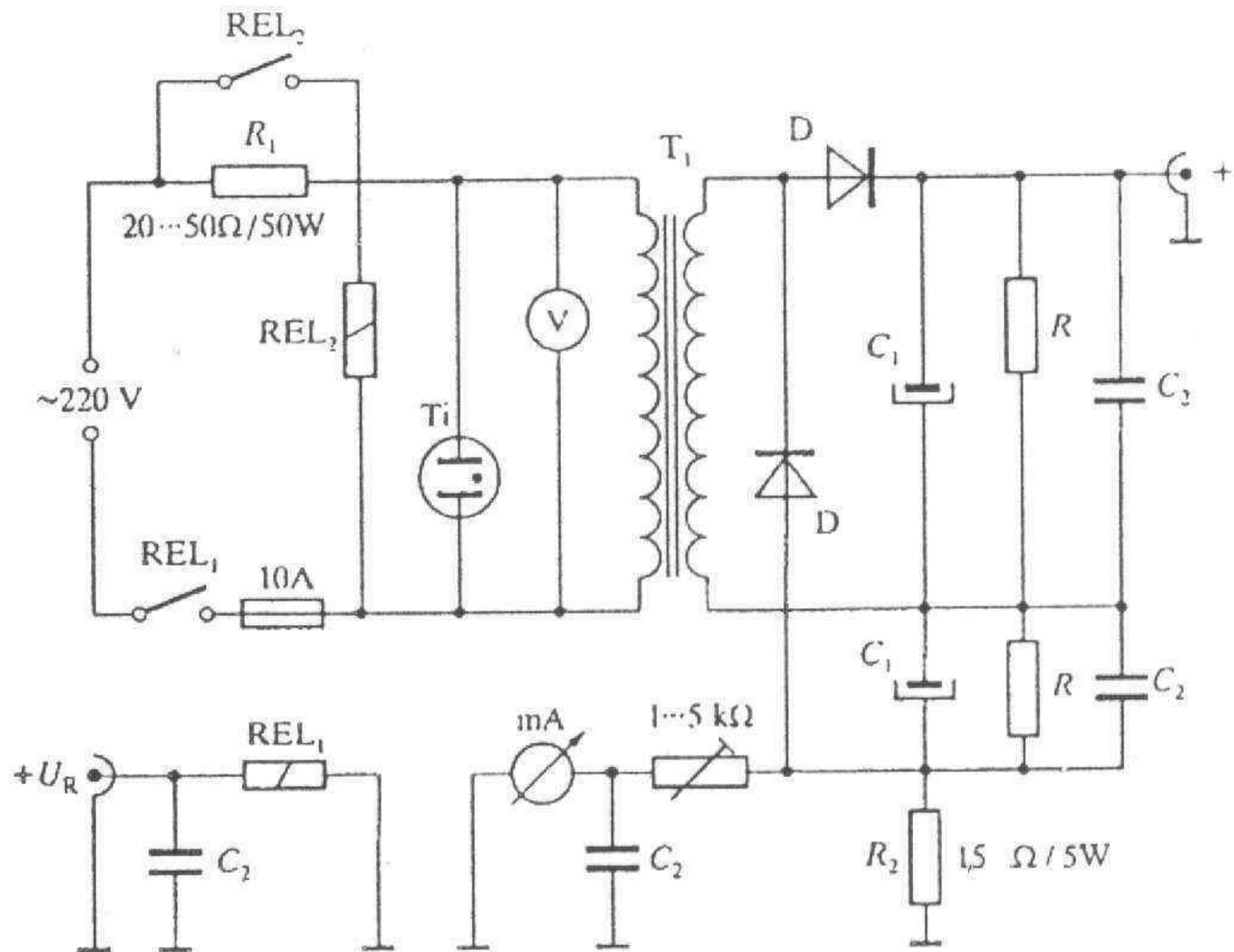


C - 1 nF/100V RF blocking
C1 - 3x 100pF/5kV
C2 - 100 pF/5kV
C3 - 250 pF air variable
C4 - 600 pF air variable
C6 - 2 nF silver mica
C7 - 1,5 nF silver mica
C8 - 600 pF silver mica
C9 - 150 pF silver mica
C10 - 2 nF/8kV door-knob
C11 - 2 nF/5kv
L1 - 6 wounds of 5mm Cu tube (length 45mm, outer diameter 60 mm)
L2 - 6 wounds of 2mm Cu wire (length 35mm, outer diameter 60 mm)
L3 - 17 wounds of 2mm Cu wire (length 80mm, outer diameter 100 mm)
VFP1- anode choke diameter 30mm length 150mm Cu wire 0.7mm wounds fit to length
VFP2- HV leakage protection choke 2 mH or more (from surplus box)
VFP3- 1.5mm Cu wire bifilar wounded choke on 15cm ferrite rod, wounds fit to length
Z - suppressor 2 wounds 2mm Cu wire 2cm outer diameter choke wounded around 47 ohm 2w resistor
T1 - mains transformer for heating and controls
P1 - Power on switch (2A/250V)
P2 - HV on switch (2A/250V)
P3 - STBY 2A/250V switch (2A/250V)
D1 - power on green LED
D2 - STBY green LED
D3 - ON AIR red LED
REL1- DPDT 8a relay
REL2- SPDT 16A/250V relay
V - blower 220V

Fonte de Alimentação



Rel1 - 12V/16A relay

Rel2 - 220V/16A relay

T1 - mains transformer 220V/1200V 1.2A

V - blower 220V (optional)

D - diode chain (6x 1n5408)

C1 - 4x 220 μ F/500V electrolytic capacitor

C2 - 4x 10nF/500V bipolar capacitor

R - 4x 150k Ω /2W resistor

T - indicator lamp